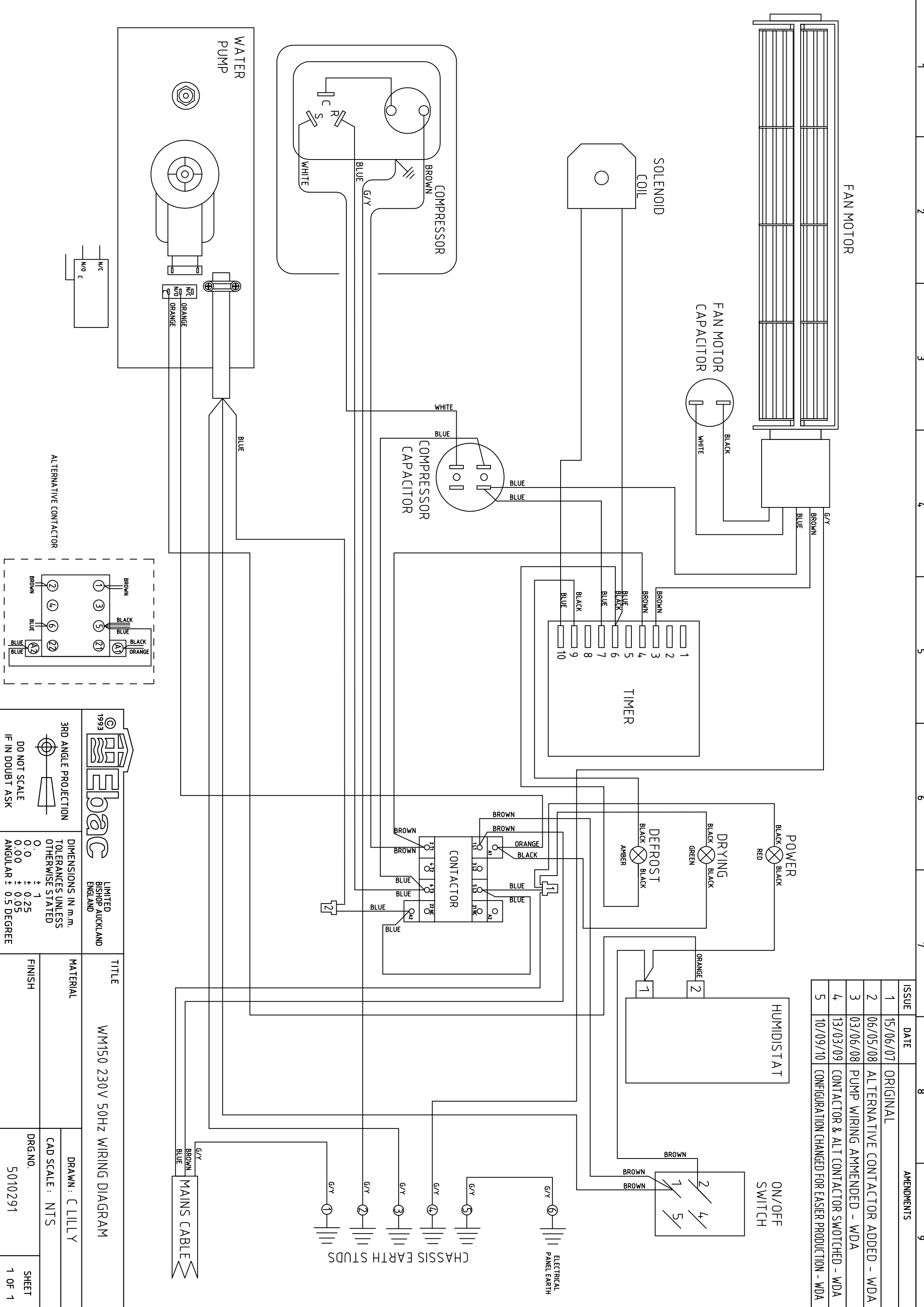
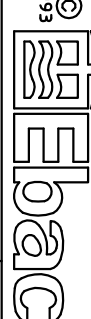


ISSUE	DATE	AMENDMENTS
1	15/06/07	ORIGINAL
2	06/05/08	ALTERNATIVE CONTACTOR ADDED - WDA
3	03/06/08	PUMP WIRING AMENDED - WDA
4	13/03/09	CONTACTOR & ALT CONTACTOR SWITCHED - WDA
5	10/09/10	CONFIGURATION CHANGED FOR EASIER PRODUCTION - WDA





1993
LIMITED
BISHOP AUCKLAND
ENGLAND

TITLE
WM150 230V 50Hz WIRING DIAGRAM

MATERIAL
DRAWN: C LILLY

FINISH
CAD SCALE: NTS

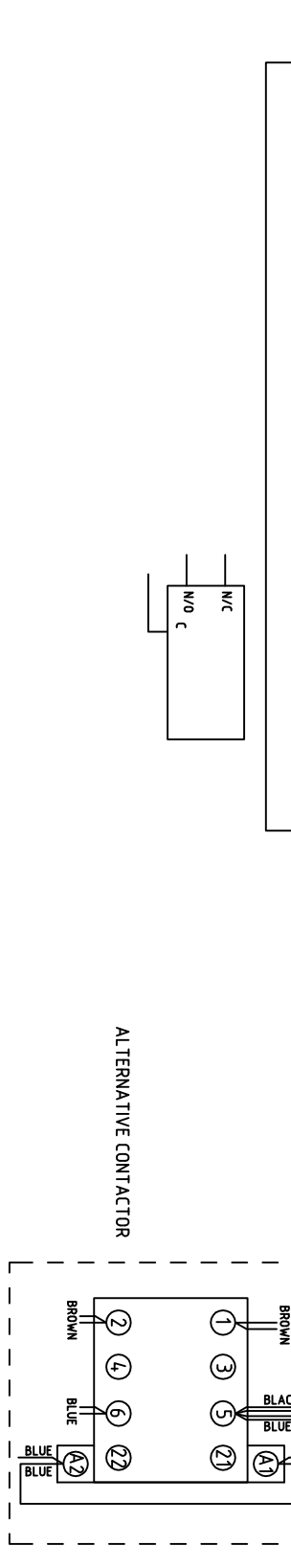
DRG.NO.
5010291

SHEET
1 OF 1

3RD ANGLE PROJECTION
DO NOT SCALE
IF IN DOUBT ASK

DIMENSIONS IN m.m.
TOLERANCES UNLESS OTHERWISE STATED

0	± 1
0.00	± 0.25
0.00	± 0.05
ANGULAR	± 0.5 DEGREE



ALTERNATIVE CONTACTOR